

**2012—2013
Mid-Coast
Santa Gertrudis Assn.
Board of Directors & Officers**

President Joe Fauth

Vice-President Tom DuBois

Secretary Debbie Townsend

Treasurer Allen Grainger

Directors—3 Year Term

Allen Grainger

979-337-4151

Agrainger@aol.com

Jason Miller

979-533-3304

Millerjason1227@gmail.com

Sandra Symon

713-828-5959

symonjsjj@aol.com

Jerome Urbanosky

936-894-2017

Jerome@ameritechsi.com

Directors—2 Year Term

Joe Fauth

936-894-3017

Faintl@aol.com

John Kiker

979-826-8329

J.w.k.1934@sbcglobal.net

Neal Schuleman

936-825-6569

Nschuleman@yahoo.com

Debbie Townsend

979-541-4989

Ivan_debbietownsend81@yahoo.com

Directors—1 Year Term

Tom DuBois

903-626-4153

Tom.dubois@us.atlascopco.com

George Hood

361-935-1208

hoodjrw@aol.com

Freddie Southall

979-532-3802

Freddiesouthall@sbcglobal.net

Kelly Vesper

830-879-2245

Cattle Rattle



Official Publication of the Mid-Coast Santa Gertrudis Breeders

February 2013

A Message from the President

Even though February is already here, "Happy New Year". I do think it is going to be a better, healthier, more profitable year for our Beef Industry. Some of us have been blessed with a few winter rains and most of us have enjoyed a mild winter thus far.

If you follow the news in our market, some positive things have been reported and projected.

From the Drovers Cattle Network the news is : '[Meat Trades Journal](#) reports red meat plays a vital role in nutrition for the immune system and cognitive function of seven different age groups.

The study collected data from 103 previous scientific papers on red meat and nutrition. Research found consumers often lack key vitamins and minerals in their daily diets. Moderate consumption of red meat provides many of those necessary components including iron, vitamin A, vitamin D, selenium, magnesium, potassium and zinc without substantially raising levels of energy and saturated fat."

From the Cattle Raiser's Convention: Prices rise as cattle numbers fall. Dry pastures pushed the nation's ranchers to cull cattle herds to their lowest level in 61 years, the USDA said Friday. Fewer cattle mean less beef to slaughter in a market where growing global prosperity has boosted demand. Economists estimated the U.S. consumer may see an increase of up to a 4 percent in beef prices in 2013, or about 20 cents per pound.

There is a market for our product, it is a healthy product and people want our product. Therefore, if you are short of cattle, want to build and or improve your herd, don't forget the Super Sale that is coming to the Houston Livestock Show and Rodeo on Friday, March 1, 2013. The sale starts at 7:00 PM with an isle party preceding the sale. See details and the Super Sale catalog on our website at

www.midcoastsantagertrudis.com.

Keep the faith, pray for our troops and for one another.

~ Joe Fauth III ~

President - Mid-Coast Board of Directors

2012 Mid-Coast Jr. Field Day Wharton, Texas

Over 20 Mid-Coast juniors along with parents and guests were at the Wharton County Fairgrounds on November 10th to attend a junior field day. The Mid-Coast officer team organized this years' event to provide insight and assistance in show day preparations.

During the day the juniors participated in several team-building activities, as well as attended demonstrations on clipping, grooming, breed standards, and showing. Juniors were encouraged to ask questions and after lunch participated in a practice showmanship with one-on-one assistance offered by former NJSGHS Showmanship winners and several former National Jr. Directors. The days' event was to enhance knowledge and to help get ready for the upcoming major shows. Each junior left with door prizes that were generously donated by local businesses and the Mid-Coast Board of Directors, along with a copy of the SGBI Breed Standards, a Cattle Rattle issue, and a copy of the SGBI open & junior show rules.

Brooke Wallace,
Mid-Coast Jr. Secretary



From the Desk of ...

Charla Borchers-Leon, SGBI President



Dear Fellow Breeders:

This time of year finds calves on the ground, more on their way, bits of green popping up in pastures, and longer, brighter days on the calendar. It also means sales and shows for many in our industry - and breed - in our part of the country.

The International Super Sale and International Santa Gertrudis Open Show on March 1-2 at the Houston Livestock Show hosted by Mid-Coast are at the forefront of that activity. Review of the catalog indicates quality offerings along with support from a number of breeders for related activities. That's what this breed is all about...helping bring out the best of the best to benefit all.

As I witnessed the 50th Anniversary National Santa Gertrudis Show held the second weekend in February in Jackson, Miss, I was convinced that with this milestone event, the best of the best of our purebred breeders and cattle participated with pride, dedication and vigor and in higher numbers than recent past years. Mid-Coast members participated and fared well.

The S.G.B.I. Board of Directors met with full in-person attendance that weekend as well and progressed with visionary decisions that will have long-term affects on your association. Mid Coast's Tom Dubois, Cheryl Grainger and I were a part of the commitments made by the board to ensure that your association is financially sound, with indications for growth for the first time in a number of years.

Additionally, Mid-Coast's Debbie Townsend has been hard at work finalizing plans for the upcoming SGBI Annual Meeting on April 18-20 in Corpus Christi. She along with Cheryl Grainger and I have made various visits to the *Sparkling City by the Sea* and to The King Ranch to coordinate 'a coming home' to where our breed began and to what will be a memorable few days in South Texas. Refer to the *Santa Gertrudis USA* for a tentative schedule of events and hotel accommodation information. For registration information, just ask Debbie. The packet is in the mail...and they really have been mailed to all S.G.B.I. members!

Come on home to South Texas and Corpus Christi where a member social and awards event will be held aboard the USS Lexington on Thursday evening. Have a video tour of Sam Kane's beef processing plant and learn about the inner workings of your association's registry, finances and marketing capabilities at a meeting forum on Friday. Come to a heritage cattle pre-sale meal catered by SGBI member Robert Briggs' Artisan Market & Catering and to buy cattle from respected old-time breeders along with those newer to the breed at the Heritage Heifer Replacement Sale on Friday evening.

Hear of this year's successes and intended future endeavors of your association - and make a point to meet newly-elected members to the Board of Directors on Saturday. And then, Mid-Coast can once again be the best of the best at the potential affiliate cook-off competition on Saturday afternoon. And...there's more!

Plan to attend an evening to remember at "The Homecoming" on Saturday evening. A social hosted by The King Ranch, followed by dinner catered by the renowned Don Strange of Texas, the Hall of Fame induction, and dancing music by recording artist and songwriter Johnny Bush comprise the evening to benefit the Santa Gertrudis Foundation with donations toward education and research. Look for a separate invitation for this event.

I look forward to seeing you in the coming weeks at home here in Texas. Mid-Coast is one of the best of the best...and I am certainly proud to be a part of you!

Charla Borchers-Leon
President, S.G.B.I.

As a Santa Gertrudis breeder, the Houston Livestock Show and Rodeo and the Mid-Coast "Aisle Party" just go hand in hand. Consider it a tradition because year after year this has been an opportunity to catch up with old friends and meet new ones and this year will be no exception. On Friday evening, March 1, 2013 at 5:45 p.m. in the Reliant Center – East Arena, the stalls will be cleaned as we get together to enjoy plenty of good food and drinks, fellowship, and the opportunity to view some excellent Santa Gertrudis cattle. Immediately followed by the Mid-Coast Super Sale.

Mid-Coast Santa Gertrudis Association would like to thank our sponsors for this year's HLSR Aisle Party:

Borchers Southern V Ranches
Briggs Ranches
Corporon Acres
Harris River Bend Farms

Red Doc Farms
San Jose Cattle Company
Robert Silva
Wendt Ranches

Buffalo-Style Beef Tacos

(Serves 4)

Ingredients

- 1 lb. ground beef (95% lean)
- 1/4 cup cayenne pepper sauce for Buffalo wings
- 8 taco shells
- 1 cup thinly sliced lettuce
- 1/4 cup reduced fat or regular blue cheese dressing
- 1/2 cup shredded carrot
- 1/3 cup chopped celery
- 2 Tbs chopped fresh cilantro

Carrot and celery sticks or cilantro sprigs (optional)

Instructions

1. Heat large nonstick skillet over medium until hot. Add ground beef; cook 8 - 10 minutes, breaking into small crumbles and stirring occasionally. Remove from skillet with slotted spoon; pour off drippings. Return to skillet; stir in pepper sauce. Cook and stir 1 minute or until heated through.
2. Meanwhile, heat taco shells according to package directions.
3. Evenly spoon beef mixture into taco shells. Add lettuce; drizzle with dressing. Top evenly with carrot, celery and cilantro. Garnish with carrot and celery sticks or cilantro sprigs, if desired.



~ Courtesy Texas Beef Council ~

DON'T MISS THE BIG EVENT!

2013 SANTA GERTRUDIS INTERNATIONAL

Super Sale

at the Houston Livestock Show,
offering "The Best of the Breed."

Sponsored by the Mid-Coast Santa Gertrudis Association

FRIDAY, MARCH 1, 2013 @ 7 PM

Reliant Center - East Arena • Houston, Texas

Pre sale Aisle Party - March 1, @ 5:45 PM



For more information on the sale,
contact the Sale Chairmen

Allen Grainger: (979) 337-4151 • Agrainger@aol.com

Tom DuBois: (281) 723-9716 • Tom.DuBois@us.atlascopco.com

MIDCOASTSANTAGERTRUDIS.COM

Join us for the...

SANTA GERTRUDIS BREEDER'S INTERNATIONAL 62ND ANNUAL MEETING

APRIL 18—20, 2013

OMNI BAYFRONT HOTEL

CORPUS CHRISTI, TEXAS

Providing: Membership support
 Association information
 Marketing strategies
 2012-17 SGBI Long Range Plan
 Opportunity to purchase proven genetics
 Fun & fellowship

Immediately followed by:

Santa Gertrudis Foundation
"The Homecoming" a Hall of Fame dinner & dance
Catered by renowned Don Strange of Texas and
Music by country/western singer/songwriter Johnny Bush

**Don't miss these exciting events with authentic food and lively
entertainment all packed in one weekend!**

"The Homecoming"

A Santa Gertrudis Foundation Fundraiser & Hall of Fame Induction

This very special event will be Saturday evening immediately following the Annual Meeting. A reception at the King Ranch to be followed by dining and headliner entertainment at the Caesar Kleberg Wildlife Center, this Hall of Fame evening will be one to remember. Your \$100 donation per person benefiting the Santa Gertrudis Foundation includes admission, dining by the renowned Don Strange of Texas and entertainment by country/western recording artist and songwriter, Johnny Bush. .

***** Not included in the Annual Meeting registration; Separate admittance required *****

F.Y.I. about the . . .

Santa Gertrudis Breeders International

62nd Annual Meeting

The Annual Meeting has been scheduled for April 18-20, 2013 at the **Omni-Bayfront Hotel** in Corpus Christi, Texas. Make your plans now and come to South Texas, where our Santa Gertrudis heritage began, for an event that promises to be memorable and educational.

Registration for the Annual meeting:

Pre-Dawn Registration: (Received by March 22nd)
 \$165.00 per person
 \$310.00 per couple

Sunset Registration: (Received after March 22nd)
 \$185.00 per person
 \$350.00 per couple

Includes:

*All sessions and meals; The "Journey; The "Gathering"; The "Heritage"; The "Dynasty"
 The USS Lexington, The Omni-Bayfront and Richard M. Borchard Regional Fairgrounds*

Registration packets were mailed to all S.G.B.I. members. If you did not receive one and are interested in attending the 62nd Annual Meeting, contact Debbie Townsend at (979)51-4989 or by e-mail at ivan_debbietownsend81@yahoo.com. Completed registration and payment should be mailed to SGBI; P.O. Box 1257; Kingsville, TX 78364 or FAX to (361)592-8572.

Hotel accommodations can be made at :

Omni-Bayfront Hotel; 900 N. Shoreline Blvd., Corpus Christi, TX 78401
 or by calling (361)887-1600 or (800)627-6461

Room rates are \$126.00 + taxes per night.

(The absolute reservation cut-off date is March 22, 2013. All rooms will be released after this date. Rooms may also be reserved by using the links:

www.santagertrudis.com

or

<http://www.omnihotels.com/FindAHotel/CorpusChristiBayfront/MeetingFacilities/SantaGertrudisBreedersInternational4.aspx>

The "Heritage"

Heifer Replacement Sale

Just as the Santa Gertrudis heritage began deep in the heart of South Texas the idea to produce a Sale at the 62nd S.G.B.I. Annual meeting was created. The idea began with a plan to encourage breeders with long-standing herd numbers to participate and renew their involvement and an invitation for active members to put together a group of cattle that offer a great selection of Santa Gertrudis heritage. We are very excited that several of the consignors are returning to this type of sale for the first time in many years. The Sale will be held on Friday evening, April 19, 2013, during the Annual Meeting. Pre-Sale activities will begin at 5:30 p.m. at the Richard M. Borchard Regional Fairgrounds in Robstown, Texas. There will be live entertainment and diner will be catered by Huvar's Artisan Market & Catering of Victoria, Texas, owned by S.G.B.I. member Robert Briggs and his wife, Erica. For more information or anyone interested in consigning to the Sale can contact Bill Lundberg, Lundberg Cattle Services; (479)967-1524 (o) or (479)880-6217 (c); lundbergcss@yahoo.com or Pat Stults, Alliance Financial Horizon; (817)534-0044; pstults@jpsalliance.com. There is a \$100 nomination fee for a pen of three due at consignment. Nomination fee or 10% commission, whichever is greater, will be held at closing. Open heifers only will be offered in the Sale.

*** Keep watching for details and don't miss this opportunity to purchase proven genetics! ***

Mid-Coast Jr. News

Upcoming Events

March 9 -

HLSR Jr. Heifer Show
Houston, Tx

April 1 -

Deadline for Mid-Coast
Scholarship Applications

Deadline for ownership -
Classes 1-5 at NJSGHS

April 10 -

Deadline for Norval &
Anna Sells Mid-Coast Jr.
Show entries

April 26-27 -

Norval & Anna Sells Mid-
Coast Jr. Show /
Jr. Meeting
Grimes Co. Fairgrounds -
Navasota, TX

June 1 -

NJSGHS Entries & Schol-
arship Applications Due

June 17-21 -

NJSGHS
San Marcos, TX

Junior Officers

Mary Failla
President
(979) 253-0101

Bayli Fisher
Vice-President
(936) 332-0628

Brooke Wallace
Secretary
(832) 361-9761

Sandra Symon
Youth Advisor
(713) 725-4678

Hey everyone!

Hope y'all had a great holiday season. I know I did and am glad to be done with semester exams. The second semester of school has started and we all know what that means—time for the Major Shows. Fort Worth has just past, but San Antonio, Houston, Rio Grande Valley, and Austin are rapidly approaching.

I want to remind all of you to pay your Mid Coast and SGBI dues. The Norval and Anna Sells show is right around the corner on April 27 in Navasota, and of course, Nationals will be right after school is out (and graduation), in June, in San Marcos, Texas.

Good Luck to everyone at all of the shows and travel safely! As we are all busy getting our cattle we need to remember to keep those grades up and get all that make up work done on time—we will all be missing a lot of school as we participate in the shows. Also remember at the shows, it is more about the learning and life experiences we have rather than just simply winning!

Miss y'all and hope to see y'all soon!

Mary Failla, Jr. President

Hello Juniors!

We have had an amazing year serving as the Mid-Coast Queen and Princess. It has truly been an honor serving the Jr. Mid-Coast Association. The past year has been busy as well as exciting and fun. We acted as visiting royalty at several county shows and had a great time running for National Queen and Princess. Meeting the Junior members from other associations was so much fun and we made many new friends. We hope to see all of you at the Mid-Coast Jr. Show in April and don't forget to look for us at all the Texas Major shows!

Love,

Jaclyn Robinson, Queen; Emma Robinson, Princess

April 27th is the date for the Mid-Coast Jr. Heifer Show & meeting. Make plans to attend by making your hotel reservations now at: Comfort Inn & Suites (936) 825-9464, Best Western Inn of Navasota (936) 870-4100 or Super 8 (936) 825-7775.



The HLS&R Santa Gertrudis Junior Show will be Saturday, March 9, 2013. The show begins at 8 A.M.

Thanks to the belt buckle donors for each class winner!

CLASS 1	Rocking A Ranch – Allen & Cheryll Grainger
CLASS 2	Todd & Terry Turner
CLASS 3	Wilson Ranch
CLASS 4	J&S Cattle Co. – Jamie, Sandra, James & Jordan Symon
CLASS 7	JHC Cattle – Helen Carleston
CLASS 8	Grand Star Cattle Co – Joe Fauth
CLASS 9	Rocking S6 Cattle – Schuleman & Combs Family
CLASS 10	Urbanosky Ranch
CLASS 13	John & Kay Kiker
CLASS 14	Vesper Ranch – Kelly Vesper
CLASS 15	Corporron Acres – Jim Corporron
Showmanship	Charlie W. Wilson, III Memorial

Howdy Juniors!

The show season is here along with crazy weather. In addition to preparing for all the major shows, it is also time to get excited about the 2013 Norval & Anna Sells Mid-Coast Junior Heifer Show. This event will not only be the greatest affiliate heifer show in the country, but it will also provide juniors and their families an opportunity to start preparing for Nationals. We will kick off this special occasion with a delicious Friday night dinner. Join us and catch up with your Mid-Coast family and friends and please welcome the chance to bring potential members, visitors, or friends. We pride ourselves on our elite affiliate program and our members are the heart of this association.

The show will be held on Saturday along with showmanship for both our juniors and old timers. PLEASE NOTICE NEW SHOW SCHEDULE. We've changed it up a bit to make it easier on those traveling long distance. We look forward to seeing everyone at the show and please direct any questions to me at (713-828-5959), symonjsjj@aol.com.

~ Sandra Symon ~



APRIL 26 KICK-OFF DINNER
APRIL 27 CATTLE SHOW
GRIMES CTY FAIRGROUNDS
NAVASOTA, TEXAS



2013 Norval and Anna Sells Mid-Coast Junior Santa Gertrudis Heifer Show

April 26th & 27th
Grimes County Fairgrounds, Navasota, TX

PLEASE MAKE NOTE OF NEW SHOW SCHEDULE

Friday, April 26

5:00 p.m. Cattle May Begin Entering Fairgrounds
7:30 p.m. Fajita Dinner/Registration

Saturday, April 27

7:30 a.m. - 9:00 a.m. Registration
9:00 a.m. Jr. Membership Meeting in Go Texan Building
11:30 a.m. Concession will open; hamburger plates
Noon Showmanship Judging (Senior, Intermediate, Junior, Pee Wee, Old Timers)
Cattle Show Immediately Following Showmanship

All juniors are encouraged to attend membership meeting. Agenda items: Scholarship winners; elections for queen, princess and officers; national show information; and brain bowl teams will be determined.

2013 ANNA AND NORVAL SELLS MID-COAST JR. HEIFER SHOW

- | | |
|---|---|
| CLASS 1 - September 1, 2012 and Later | 13 - September 1, 2011 - October 31, 2011 |
| 2 - July 1, 2012 - August 31, 2012 | 14 - July 1, 2011 - August 31, 2011 |
| 3 - May 1, 2012 - June 31, 2012 | 15 - May 1, 2011 - June 30, 2011 |
| 4 - Calf Champion | 16 - Yearling Champion |
| 5 - Reserve Calf Champion | 17 - Reserve Yearling Champion |
| 6 - April 1, 2012 - April 30, 2012 | 18 - March 1, 2011 - April 30, 2011 |
| 7 - March 1, 2012 - March 31, 2012 | 19 - January 1, 2011 - February 28, 2011 |
| 8 - February 1, 2012 - February 28, 2012 | 20 - October 1, 2010 - December 31, 2010 |
| 9 - January 1, 2012 - January 31, 2012 | 21 - July 1, 2010 - September 30, 2010 |
| 10 - Junior Calf Champion | 22 - Senior Champion |
| 11 - Reserve Junior Calf Champion | 23 - Reserve Senior Champion |
| 12 - November 1, 2011 - December 31, 2011 | 24 - Grand Champion |
| | 25 - Reserve Grand Champion |

Star 5 Show to begin after purebred show; follow same class breaks. *Mid-Coast reserves the right to combine classes or divisions depending on the number of animals in each class.*

Sponsors To Date:

J&S Cattle Co.
Rocking A Ranch
Charles W. Wilson III Memorial
Wilson Ranch
Rocking S6 Cattle
Vesper Ranch

2013 Norval and Anna Sells Mid-Coast Junior Santa Gertrudis Heifer
Show
ENTRY FORM

YOUR 2013 MID-COAST DUES MUST BE CURRENT TO PARTICIPATE

Entry deadline: April 10th

Entry fee: \$25

Late Fee: \$15

Please return entries along with fees (payable to Mid Coast S.G. Assoc.) to the following address:

Sandra Symon 713 County Road 133, Alvin, TX 77511
symonjsjj@aol.com 713-828-5959

Attending **FREE dinner on Friday night?**

If so, how many? _____

This year we will have a concession stand set up for serving throughout the show on Saturday in the show arena.

Pee Wee showmanship for kids age 7 and under:

Name: _____ Name: _____

List Additional Names on Back

EXHIBITOR INFORMATION:

Exhibitor's Name _____

Address _____ **County** _____

City _____ **State** TX **Zip** _____

Date of Birth _____ **Age (As of 4-27-2013)** _____

1. Name of Heifer _____ **Star 5 (Circle) Y N**

Date of Birth _____ **Registration #** _____

2. Name of Heifer _____ **Star 5 (Circle) Y N**

Date of Birth _____ **Registration #** _____

3. Name of Heifer _____ **Star 5 (Circle) Y N**

Date of Birth _____ **Registration #** _____

4. Name of Heifer _____ **Star 5 (Circle) Y N**

Date of Birth _____ **Registration #** _____

5. Name of Heifer _____ **Star 5 (Circle) Y N**

Date of Birth _____ **Registration #** _____

(SHOW USE ONLY)

TOTAL # OF HEAD ENTERED: PB: _____ STAR 5: _____ PAID: _____

Mid Coast Santa Gertrudis Association Membership Application

Membership Year January—December

Please accept this application for my membership in the Mid-Coast Santa Gertrudis Association. Payment for dues must be enclosed.

_____ \$25.00 Junior Member

_____ \$50.00 Active Member

_____ \$40.00 Associate Member (Non voting)

Last Name	First	MI	Spouse Name	
-----------	-------	----	-------------	--

Ranch Name	E-mail Address	SGBI Herd No.
------------	----------------	---------------

Home Phone	Mobile	Ranch Phone
------------	--------	-------------

Home Address	City	State	Zip	County
--------------	------	-------	-----	--------

Ranch Manager	Mail Address	City	State	Zip
---------------	--------------	------	-------	-----

Business Address	City	State	Zip	Business Phone
------------------	------	-------	-----	----------------

Junior Members Only – Birth Date, School Name and Grade

Basic Operation: _____ Purebred _____ Commercial

Would you like the following listed on our website? (Please check those that apply)

_____ Name/Ranch _____ Address _____ Phone _____ E-Mail

Please mail this completed application to:

Allen Grainger, Treasurer
P. O. Box 2282 * Brenham, TX 77834
Phone (979) 337-4151

Please visit our website at www.midcoastsantagertrudis.com

Everyday Environmentalist

~ Courtesy Texas Beef Council ~



America's farming and ranching families love the land! They are committed to leaving the environment in better shape for the next generation. Preserving, conserving and restoring this country's natural resources like open space, grasslands, wetlands, clean air and wildlife habitat are a priority for beef farmers and ranchers. The land sustains them and they understand that they must sustain the land while thoughtfully raising cattle to produce tender, delicious, healthful beef.

Cattle farmers and ranchers take many of the same steps to conserve as consumers do, including recycling, composting and installing energy-efficient appliances and light bulbs in their homes. In addition, beef farmers apply specialized environmental practices on farms and ranches to conserve and improve the natural resources that are critical to their business. They have numerous practices in place to accomplish environmental goals such as nurturing wildlife, preventing erosion or conserving and protecting water.

Today's farmers and ranchers are using fewer natural resources to produce a more abundant and affordable supply of great tasting, nutrient rich beef. Farmers and ranchers who raise cattle are doing their part to protect the environment while providing food for a hungry world.

- Today's American farmer feeds about 144 people worldwide.
- 1.8 million fewer farms are feeding a U.S. population that has increased 61 percent since 1960.
- U.S. beef farmers and ranchers provide 25 percent of the world's beef supply with 10 percent of the world's cattle.
- More than half the agricultural land in the United States is unsuitable for crop production.
- Grazing animals on this land more than doubles the land area that can be used to produce food in this country.

Environment and health-conscious consumers should feel good about choosing beef. Beef contributes significantly to a healthy diet and minimally to total greenhouse gas (GHG) emissions in the United States. According to the Environmental Protection Agency, livestock production in the U.S. contributes less than 3 percent of total U.S. GHG emissions.

Beef farmers and ranchers are everyday environmentalists. For more information on beef production and the environment, please visit

<http://www.beeffrompasturetoplate.org/environment.aspx>.





It's Time to Start thinking about the National Jr. Santa Gertrudis Heifer Show! The show will be held this year in San Marcos, TX on June 17-21, 2013. Those of you planning to attend need to think about reserving your rooms, NOW. Below is hotel information. RV, water, and electricity spots for stalling will be set up the 1st of April. We will send out an email blast with all the information leading up to reserving these.

Headquarter Hotel

Embassy Suites Hotel, Spa, and Conference Center

1001 E. McCarty Lane, San Marcos, TX 78666

512-392-6450

Rate: \$139.00/nt + tax

(*If a room is required for June 14 & 15 rate is \$179.00/nt)

(Hotel includes 2 room suites with breakfast at 6 am, spa, pool, restaurant and bar – The banquet will be held at the hotel.)

Other hotels –

Country Inn & Suites

1560 IH-35 South, San Marcos, TX 78666

512-392-8111

Rate: \$119.00/nt – King \$129.00/nt – 2 Queens

(Hotel has indoor pool, on-site fitness center, business center and complimentary full, hot breakfast.)

Candlewood Suites (*New Hotel - Same owner as Country Inn & Suites)

600 Wonder World Drive, San Marcos, TX 78666

512-392-8111

Rate: \$114.00/nt – King \$124.00/nt – 2 Queens

(Rooms include a small kitchen with a full size refrigerator/freezer, cook-top, microwave, dishwasher, pots/pans, dishes, and kitchen sink – All rooms are suites.)

Baymont Inn & Suites

4210 IH-35 South, I-35 at Centerpoint Road, San Marcos, TX 78666

512-392-6800

Rate: \$79.00/nt

(Rooms include microwaves, refrigerators, and continental breakfast.)

Any questions: Contact Heather Blewett at heathershomes@ymail.com

Mid-Coast Brand Ads

BIERI FARMS

SGBI Herd 474

P.O. BOX 441, ANGLETON, TX 77516
OFFICE: 979-849-7911 • FAX: 979-849-1926
OLDAGGIES6@AOL.COM • WWW.BIERIFARMS.COM

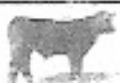
Rocking A Ranch

ALLEN & CHERYL GRAINGER
P.O. BOX 2282, BRENNHAM, TX 77834
979-830-8785

Santa Gertrudis Cattle
Herd #670
"The Tradition Continues"

CF Cattle Co.

Curtis & Kathy Fuchs
44 Three Oaks Lane
Brenham, TX 77833
(979) 289-5635



Star Five
Club Calves



This Space ...
Waiting for YOUR advertisement

CA CORPARRON ACRES

Jim Corparron Ranch: 979-562-2405
3148 County Road 229 Cell: 979-561-7185
Schulenburg, TX 78956 E-mail: jim@corparron.com
www.corparronacres-DeosBrosRanches.com



Rocking S Cattle Co.

Registered Santa Gertrudis Cattle
Schulenburg Family
936-825-6569 • Cell: 936-870-6385
1409 Stacey, Navasota, Texas 77868



Don't miss you chance to advertise!

Townsend Cattle Co.

Ivan & Debbie Townsend
PO Box 152 • Louise, TX 77485
979-541-3400
townsend30@yahoo.com

D Bar J Ranch

Delbert Walker

8456 FM 227 E, Grapeland, TX 75844
(936) 687-5800

D-J

D-J

VESPER RANCH

J.B. "DICK" & KELLY VESPER

SANTA GERTRUDIS SINCE 1940,
CHARTER MEMBER SGBI - HERD 43
DRAWER 679, COTULLA, TX 78014
830-679-2345 • KELLY'S CELL: 903-436-3606



Santa Gertrudis Cattle



Herd No. 14664

DuBois Cattle Company

Tara & Debbie DuBois
P.O. Box 576, Jewett, TX 75846

Home (803) 626-4153
Office (803) 626-7591



SANTA GERTRUDIS CATTLE

Dan Wendt

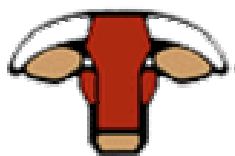
SGBI Herd No. 621
HERD ESTABLISHED IN 1954
PERFORMANCE TESTING SINCE 1959

E-mail: dwendt@tksconnect.net

5673 FM 457
Bay City, Texas 77414

PH: (979) 245-5100
FAX: (979) 244-4383





Mid-Coast Santa Gertrudis Association
 Cheryl Grainger, Editor
 P.O. Box 2282
 Brenham, TX 77834



Coming Events

2013

- March 1 — International Super Sale, Reliant Center, Houston, TX
- March 2 — HLSR International Santa Gertrudis Show, Reliant Center, Houston, TX
- March 9 — HLSR Jr. Santa Gertrudis Heifer Show, Houston, TX
- April 1 — Mid-Coast Santa Gertrudis Scholarships Due
- April 10 — Mid-Coast Jr. Heifer Show entries Due
- April 18 –20 — SGBI Annual Membership Meeting, Corpus Christi, TX
- April 26-27 — Mid-Coast Jr. Heifer Show & Jr. Meeting, Grimes Co. Fairgrounds, Navasota, TX
- June 1 — NJSGHS Entries/Scholarship/Director Applications Due
- June 17-21 — National Jr. Santa Gertrudis Heifer Show, San Marcos, TX